



DELAWARE DEPARTMENT OF
**NATURAL RESOURCES AND
ENVIRONMENTAL CONTROL**

FY24 Budget Presentation to the
Capital Improvement Committee
March 23, 2023



Our Divisions



Air Quality

- Air Permits
- Air Monitoring
- Vehicle Emissions
- RGGI



Climate, Coastal and Energy

- Climate and Sustainability
- Coastal Zone
- Energy Efficiency and Renewables
- Federal Consistency for Coastal Projects
- Research Reserve: Blackbird Creek and St. Jones
- Weatherization



Community Affairs

- Environmental Crimes Unit
- Community Ombudsman
- Small Business Ombudsman
- Regulatory Advisory Service
- Public Affairs/Marketing/Communications
- Legislative Affairs

Our Divisions



Fish and Wildlife

- 19 Wildlife Areas, 60 Boat Ramps
- Boat Registration and Boating Safety
- Delaware Bayshore
- Hunting and Fishing Licenses
- Fish & Wildlife Natural Resources Officers
- Mosquito Control
- Fisheries and Wildlife Management



Parks and Recreation

- **Gold Medal Winning!**
- 17 State Parks
- 20 Vendors and Concessionaires
- Camping, Cottages and Cabins
- 8 million visitors annually
- Outstanding volunteer support
- Two- time Gold Medal Winning Park System



Waste and Hazardous Substances

- Boiler Safety
- Emergency Response
- Recycling
- Site Remediation, including Brownfields
- Solid Waste Permits
- Storage Tanks

Our Divisions



Water

- Dock and Subaqueous Permits
- Environmental Lab
- Septic Permits
- Wastewater Treatment Systems
- Well Permits



Watershed Stewardship

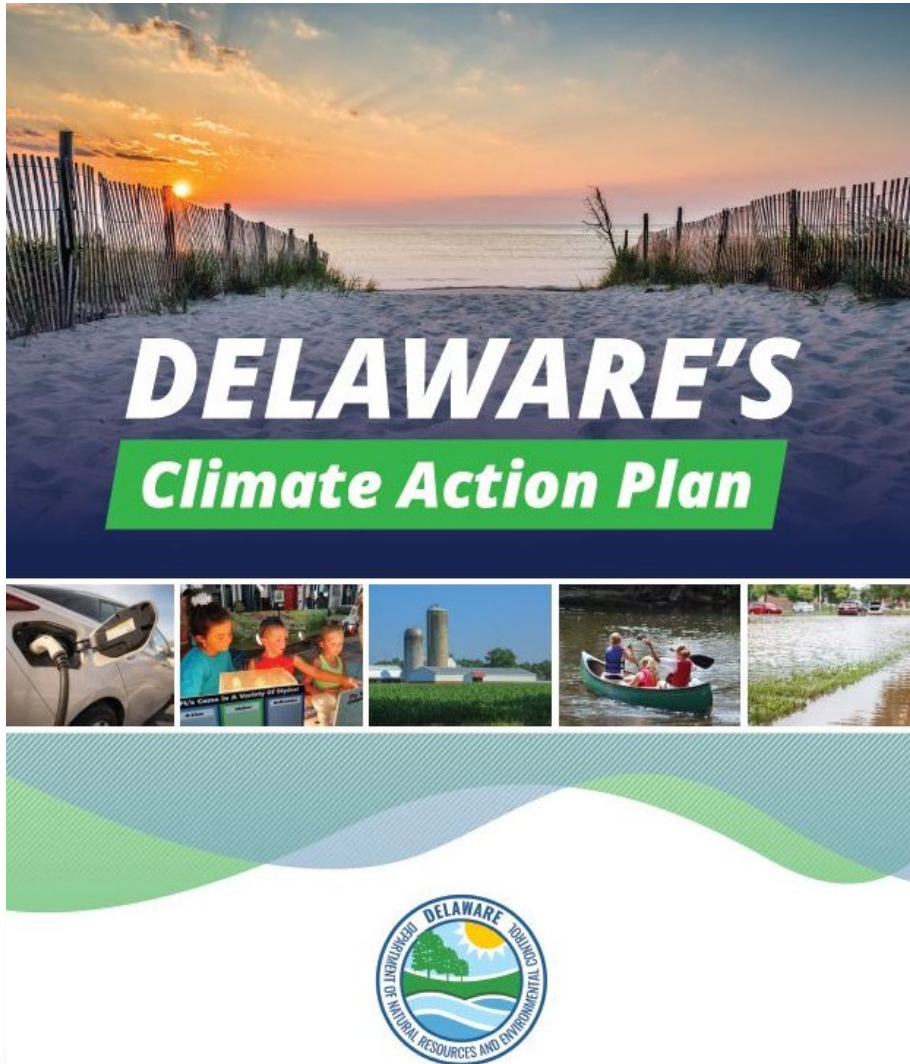
- Beach Preservation
- Dam Safety
- Drainage
- Dredging
- Tax Ditches
- Water Quality in 45 Watersheds
- Wetlands
- Waterway Marking



Office of the Secretary

- Environmental Finance
- Fiscal Management
- Innovation and Technology Services
- Human Resources
- Operations

DNREC Priorities in FY23, FY24 and the Future



- Climate Change
- Environmental Justice
- Clean Water Trust Fund/SRF
- Fee Increases
- Recruiting and Retaining Great Employees

FY24 Bond Bill Request: Operational Items

Clean Water State Revolving Fund	\$	18,000,000
Shoreline and Waterway Management	\$	7,500,000
Park Facility Rehabilitation and Public Recreational Infrastructure	\$	7,500,000
Resource, Conservation and Development	\$	5,000,000
Minor Capital Improvements and Equipment	\$	1,000,000
Conservation Cost Share	\$	1,700,000
Tax Ditches	\$	1,148,700
Debris Pits	\$	1,000,000
Dikes/Dams	\$	1,000,000
Statewide Trails and Pathways	\$	1,000,000
Delaware Bayshore Initiative	\$	500,000
Conservation Reserve Enhancement Program (CREP)	\$	25,000

FY24 Bond Bill Request: Project List

Christina/Brandywine Remediation, Restoration and Resilience Project (CBR4)	\$	786,000
Statewide Groundwater Monitoring Network	\$	600,000
White Clay Project Funding Updates – Nature Center/Big Pond/Maxwell House	\$	3,000,000
EDA Implementation Lums Pond, Killens Pond, Fort Delaware and Trap Pond Dock Repairs	\$	2,000,000
Killens Pond Waterpark	\$	3,000,000
Fort Miles Museum	\$	2,500,000
Lums Pond Outdoor Adventure Center	\$	750,000

FY24 Capital Improvement Items in GRB: Pass-Thru Funding

<u>Pass-Thru Funding</u>		
Redevelopment of Strategic Sites (Fort DuPont)	\$	2,250,000
Total Capital Improvement Items	\$	60,259,700

FY24 Capital Improvement: Request for \$18 Million to Support CWI, State Match & Salaries

State Match for the Clean Water State Revolving Fund	\$	2,429,600
Low Interest Septic Loans Converted to Grants	\$	500,000
Salaries for Division of Water	\$	512,328
Clean Water Initiative (CWI) Projects	\$	14,558,072
Total	\$	\$18,000,000





Rockland Mills retaining wall under construction

FY23 Bond Bill: Highlighted Projects Resource, Conservation & Development

- Projects were established by 21st Century Fund Investment Act of 1995 from a settlement with New York
- Enhance community health by improving watershed and drainage issues statewide
- Partnership with Delaware's three Conservation Districts

Request \$5,000,000



DELAWARE DEPARTMENT OF
NATURAL RESOURCES AND
ENVIRONMENTAL CONTROL



During Construction



After Construction

Whitechapel New Castle County RC&D Drainage Improvement Project

- Addressed safety issue
- Improved drainage
- Prevented expansion of sinkholes



During Construction



After Construction

The Meade / Cooper Kent County RC&D Drainage Improvement Project



DELAWARE DEPARTMENT OF
NATURAL RESOURCES AND
ENVIRONMENTAL CONTROL



During Construction



After Construction

Bucks Branch Prong 5 / Bell Sussex County RC&D Drainage Project

- Project Completed in November of 2022
- Example of a Drainage Project with Water Quality BMP's incorporated into the design
- Leveraged Chesapeake Implementation Grant Funds to cover 50% of the project cost, RC&D funds were used as match.



DELAWARE DEPARTMENT OF
NATURAL RESOURCES AND
ENVIRONMENTAL CONTROL



Before Construction



During Construction

- Created Stormwater Outlet for Denton Manor Community
- Replaced failing crossroad and driveway pipes
- Stormwater infiltration incorporated in design



After Construction

Denton Manor / Jenson Sussex County Drainage Improvement Project



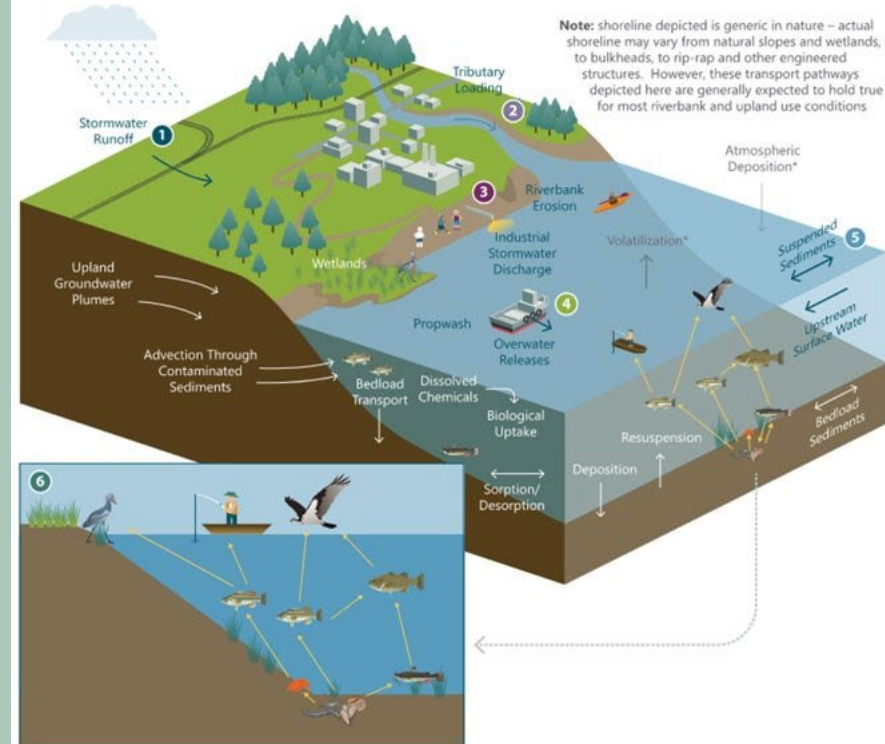
DELAWARE DEPARTMENT OF
NATURAL RESOURCES AND
ENVIRONMENTAL CONTROL

FY24 Capital Improvement Project In GRB:

Christina/Brandywine Rivers Remediation, Restoration and Resilience Project (CBR4)

- Project defined as I-95 (east of Newport) to the mouth of the Delaware River and Brandywine Creek from the Amtrak northeast corridor to the mouth at the Christina River
- Environmental modeling phases to address legacy toxic contaminants in these rivers
- Funding for the remaining data gap filling and environmental modeling phases of the CBR4 project

\$786,000



- Note:** shoreline depicted is generic in nature – actual shoreline may vary from natural slopes and wetlands, to bulkheads, to rip-rap and other engineered structures. However, these transport pathways depicted here are generally expected to hold true for most riverbank and upland use conditions
- 1 Stormwater Runoff:** During storm events, stormwater may transport upland contaminants to River through stormwater runoff. Contaminants may originate from agricultural areas, industrial sites, or roadways.
 - 2 Tributary Loading:** Contaminants potentially present in tributaries may be deposited in River via typical flow conditions. Contaminants may originate from sources such as stormwater runoff (See Note 1) and/or industrial stormwater discharges to the tributaries (See Note 3). Loading may be increased during storm events.
 - 3 Industrial Stormwater Discharge:** Discharge of contaminants from industrial facilities includes both active and historic discharges. This loading may include currently permitted discharges.
 - 4 Overwater Release:** Includes both intentional and accidental release of contaminants from marine vessels on the River. Typical releases may include petroleum products, refuse, or sewage.
 - 5 Suspended Sediments:** Contaminated sediment in the River become suspended in the water column as a result of typical tidal conditions, propeller agitation from vessels, or storm events. Suspended sediment particles are then redeposited at different locations in the River system.
 - 6 Biologic Processes:** Contaminated sediment is ingested by benthic organisms, which in turn are ingested by fish or bird species. The fish or birds are then ingested by larger fish, birds, or humans which transports the contaminants throughout the food chain.

*De minimis contribution to Christina River system





FY24 Capital Improvement Project In GRB:

Statewide Groundwater Monitoring Network

- New monitoring wells are needed in Sussex County due to significant growth
- Due to increased water use for public, agricultural irrigation, industry and private domestic users
- Monitor water supply and quality (possible saltwater intrusion)

\$600,000



FY24 Capital Improvement Project In GRB:

White Clay Project Funding Updates – Nature Center/Big Pond/Maxwell House

- Nature Center construction, including handicapped accessible bathrooms
- ADA accessibility to the Robinson House and upgrades to the Chambers House
- Renovation of the Maxwell House to serve as the park office, including accessibility, public bathrooms and park office parking

\$3,000,000



FY24 Capital Improvement Project In GRB:

Economic Development Administration (EDA)
Implementation Lums Pond, Killen's Pond, Fort Delaware and Trap Pond Dock Repairs

- Repairs needed at multiple docks at Lums Pond, Killen's Pond, Fort Delaware and Trap Pond State Parks
- DNREC received EDA grant in 09/2022 for planning and design of inland pond docks throughout state parks

\$2,000,000





FY24 Capital Improvement Project In GRB:

Killen's Pond Waterpark Improvements

- Phase II Renovations – main pool annual repairs to the siding, steps and zero grade entrance
- Damages are too extensive for routine repairs
- DNREC is planning and designing the main pool in an effort to construct a new pool in the fall of 2023
- DNREC is performing necessary repairs for safe 2023 opening

\$3,000,000



FY24 Capital Improvement Project In GRB:

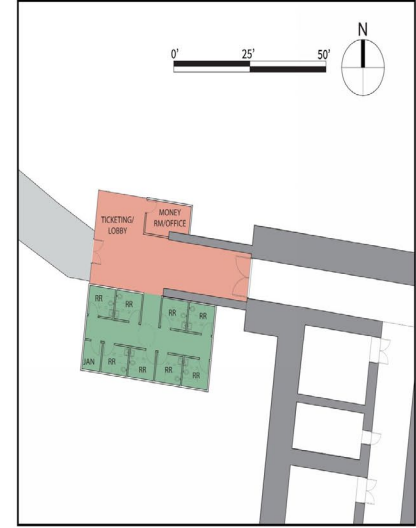
Fort Miles Museum

- Phase I of Fort Miles Museum upgrade
- Construction of a new museum entrance, lobby, office space and public restroom
- New exhibit area in the lobby and hallway area to welcome guests

\$2,500,000



BATTERY ENTRY LOBBY



BATTERY 519 LOBBY PLAN



PLOTTING ROOM EXHIBIT



HALLWAY INTERPRETATION



MAP ROOM EXHIBIT



FY24 Capital Improvement Project In GRB:

Lums Pond Outdoor Adventure Center

- Planning and preparing the construction documents for a new Lums Pond Outdoor Adventure Center
- Replace existing nature center
- New center will provide opportunities for families to learn outdoor skills: fishing, hunting, rock climbing, paddlings and biking

\$750,000



Thank you!

