

# JOINT FINANCE COMMITTEE HEARING FISCAL YEAR 2022 BUDGET



MELISSA A. SMITH  
DIVISION DIRECTOR

DIVISION OF SERVICES FOR AGING AND ADULTS WITH PHYSICAL DISABILITIES  
Department of Health and Social Services  
February 23, 2021  
Virtual, conducted via Zoom

Comments available online at <https://dhss.delaware.gov/>

1

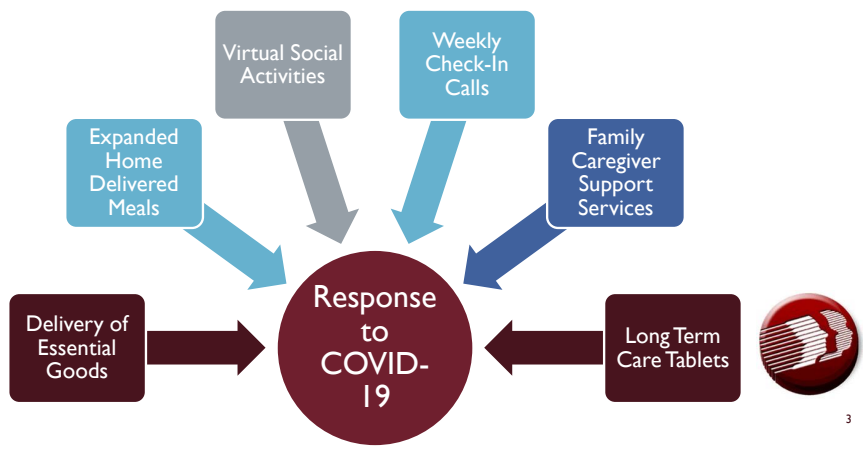
## DIVISION OVERVIEW



2

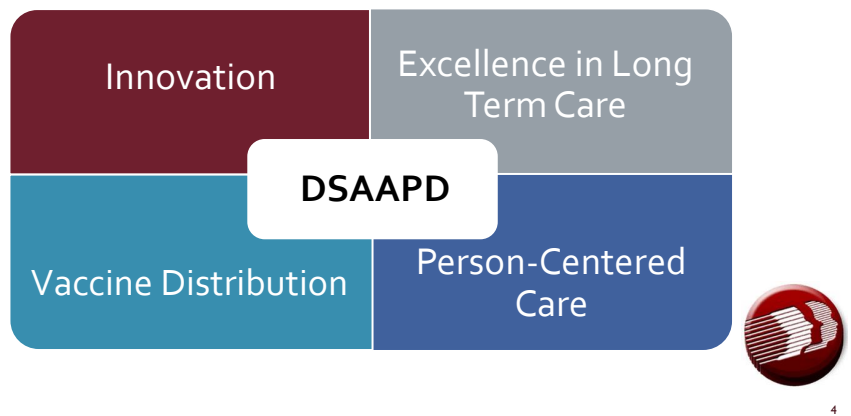
2

# ACCOMPLISHMENTS



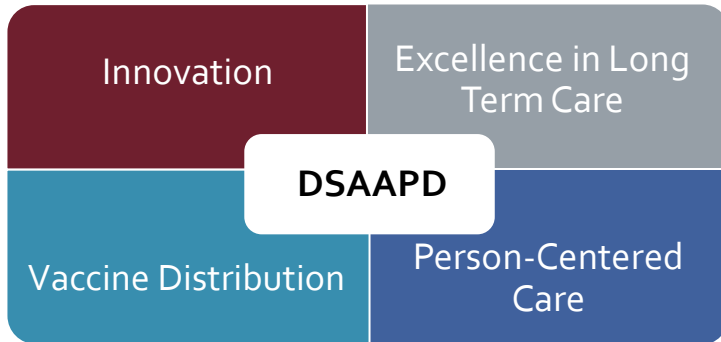
3

# LOOKING AHEAD



4

## LOOKING AHEAD



5

5

## FY 2022 GOVERNOR'S RECOMMENDED BUDGET

### FY 2022 Governor's Recommended Budget (\$ in thousands)

|              | GF       | ASF     | NSF      | Total    |
|--------------|----------|---------|----------|----------|
| FTEs         | 629.0    | 0       | 27.0     | 656.0    |
| Dollars (\$) | 60,631.0 | 3,810.5 | 18,158.0 | 82,599.5 |

**Budget Definitions:**

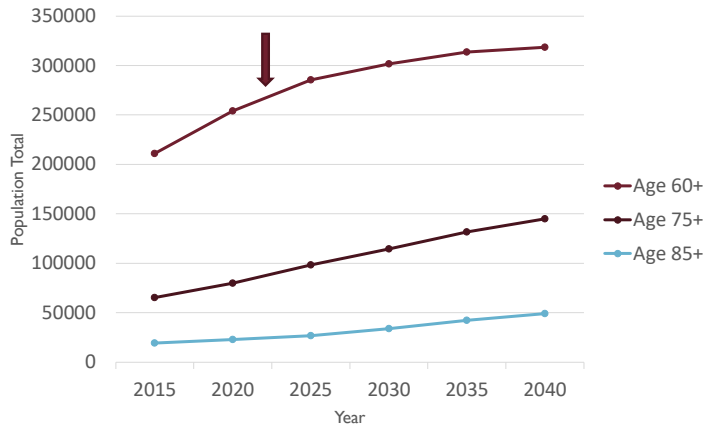
GF – General Funds  
 ASF – Appropriated Special Funds  
 NSF – Non-Appropriated Special Funds  
 FTEs – Full Time Equivalent Positions



6

6

## FY 2022 GOVERNOR'S RECOMMENDED BUDGET



7

7



# THANK YOU

8

8