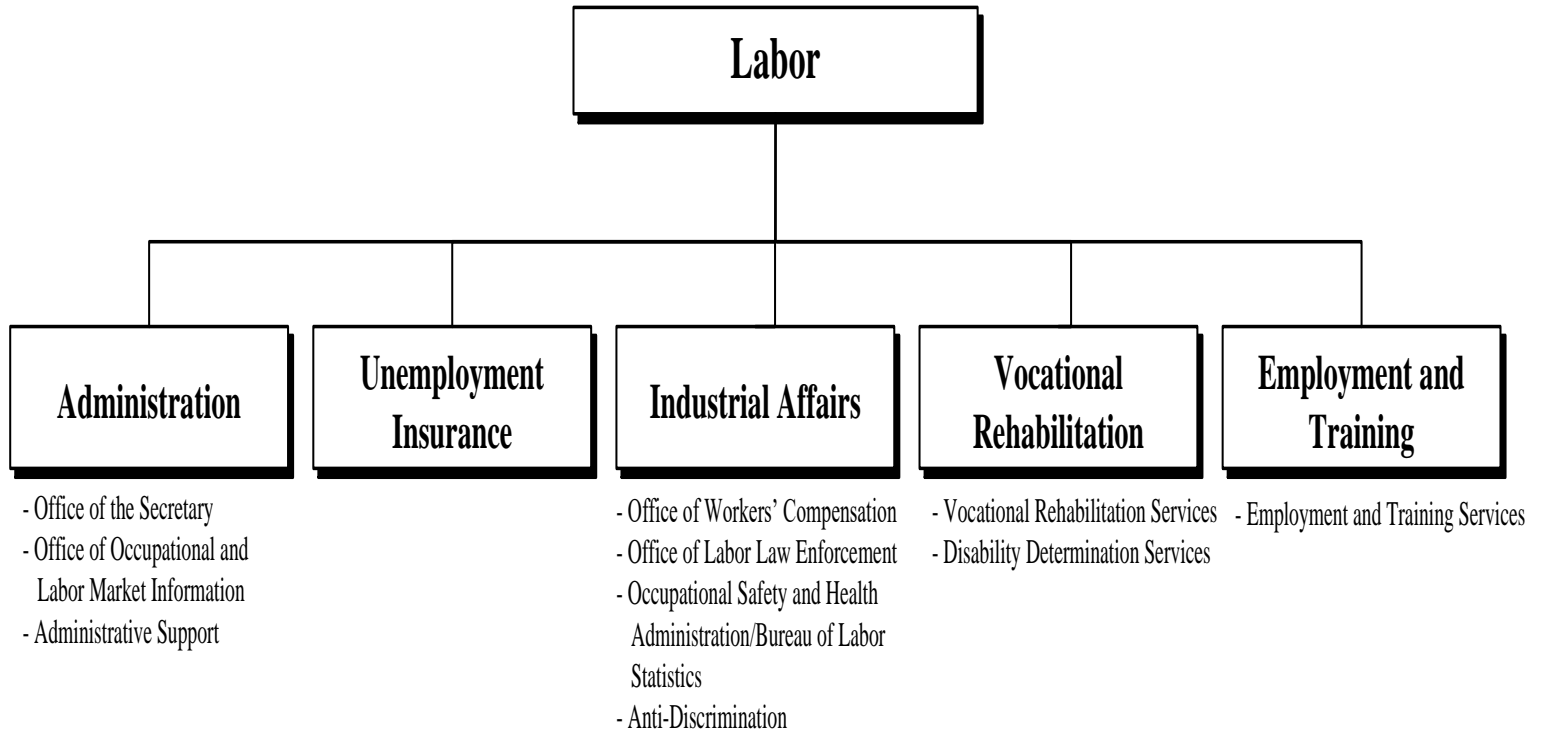




FY22 Joint Finance Committee Hearing • 02/09/2021





Office of the Secretary

Office of Occupational and Labor
Market Information (OOLMI)

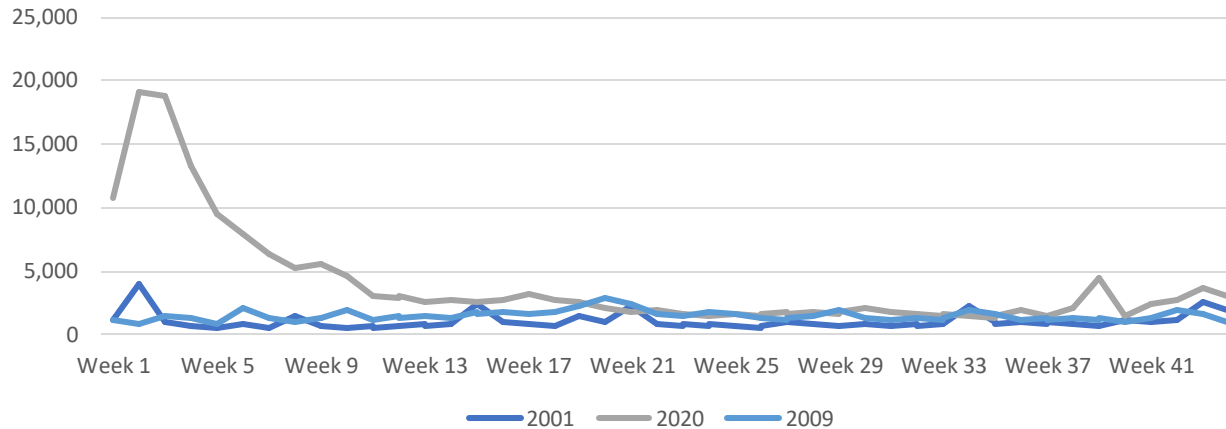
Administrative Support

Office of Occupational and Labor Market Information

- OOLMI works in partnership with the federal Bureau of Labor Statistics (BLS) to provide timely and incisive data and analysis for a variety of users.
- It publishes a monthly review of current data, a more detailed annual economic report, wage estimates, and job projections for 500 occupations and 100 industries.
- OOLMI also continues to provide statistical and economic expertise to the other divisions in DOL.

Unemployment Insurance

Delaware UI Claims
2001 - 2009 - 2020



2020 in Review

- | | |
|--------------------------------------------------------------------------------------------------|------------------------------------------------------------------------------------------------|
| <ul style="list-style-type: none"> • 175K+ initial claims, 1.4M continuous claims | <ul style="list-style-type: none"> • >12,000 claims adjudication backlog |
| <ul style="list-style-type: none"> • \$1 billion benefits paid | <ul style="list-style-type: none"> • < 500 appeal backlog |
| <ul style="list-style-type: none"> • Staff increased from 84 to more than 220 | <ul style="list-style-type: none"> • 2020 US DOL Admin appropriation > \$16M |
| <ul style="list-style-type: none"> • Launched new systems | <ul style="list-style-type: none"> • >\$3M SBR for infrastructure and fraud |

Families First Coronavirus Response Act

- Emergency Transfer for UI Admin (\$3MM)
- Interest Free Loans for Trust Fund – **We borrowed (and repaid) \$33M in 2020**
- Full funding of extended benefits (EB) through 12/31/20 - **\$7M**

Pandemic Unemployment Assistance (PUA) – Sec. 2102

- Self-employed, independent contractors, others that do not qualify for any other UI programs – **Extended from Dec. 27, 2020 – March 13, 2021**
- Vendor selected April 17, 2020; system launched May 16, 2020.
- **13,500+ Claims, 8,451 individual paid more than \$105M in benefits**

Gov't & Nonprofits – Sec. 2103

- Allow flexible interpretations of state law relating to timely payment & assessment of penalties & interest – **We suspended billing without penalty**
- 50% federal funding for benefits paid by reimbursable nonprofit and gov't entities for the weeks of unemployment 3/13/20 – 12/31/20 - **\$10.5M as of Nov. 30**

Unemployment Insurance

Federal Pandemic Unemployment Compensation (FPUC) – Sec. 2104

- Paid an additional \$600 per week for regular UI, PUA, PUEC, and EB for the weeks of March 29 – July 25. **Modified to \$300 for Dec. 27, 2020 – Mar. 13, 2021**

First Week of Regular UI Benefits – Sec. 2105

- 100% federal funding for benefits for first week of benefits from Mar. 29 – Dec. 26, 2020 - **\$16M paid to UI Trust Fund**

Pandemic Emergency Unemployment Compensation (PEUC) – Sec. 2107

- 13 weeks of 100% federally funded benefits for Mar. 29 – Dec. 31, 2020
- **Extended from Jan 1, 2021 – March 13, 2021**

Division of Industrial Affairs

- Workers' Compensation
- Occupational Safety and Health Consultation Statistics
- Construction Industry Enforcement
- Wage & Hour Enforcement and,
- Anti-Discrimination

Office of Workers' Compensation

- The Office of Workers' Compensation administers and enforces state laws, rules and regulations regarding industrial accidents and illnesses.

Office of Safety and Health Consultation & Statistics

- OSHA protects the health and safety of workers through consultations on construction sites and with manufacturers

Office of Construction Industry Enforcement

- The Office of Construction Industry Enforcement administers and enforces Delaware's Prevailing Wage Law and Workplace Fraud Act regarding the payment of prevailing wages on state projects and the misclassification of workers on construction projects.

Office of Wage and Hour

- The wage and hour section enforces wage payment laws, minimum wage laws, child labor laws, and other labor laws related to pay and working conditions.

Office of Anti-Discrimination

- The Office of Anti Discrimination, enforces workplace civil rights laws by investigating, mediating and conciliating employment discrimination and sexual harassment complaints in partnership with the US Equal Employment Opportunity Commission (EEOC).

Division of Vocational Rehabilitation (DVR)

- Last year, DVR served over 5,535 people with disabilities seeking employment.
- In FY20, 675 individuals achieved a successful employment outcome and earned an average wage of \$12,71
- Increased outreach to more than 700 businesses, successful DVR clients saved more than \$1 million in Social Security and related government benefits by being employed.

The Disability Determination Service (DDS)

- Adjudicates social security disability claims for Delaware
- *In FY20 the DDS adjudicated and cleared **9,180** cases with a **96%** accuracy.

COVID Operations

- All DVR services are operating virtually to serve customers, utilizing a variety of platforms and programs. Our contracted providers also operate virtually as well, and at job sites when necessary.
- DVR is partnering with all school districts to serve students online and at their IEP meetings.
- The DDS has begun to receive disability claims related to the long-term effects of the COVID virus.

Division of Employment and Training

- Employment & Training provides services enabling employers and job seekers to make informed employment and training choices leading to employment.

DET's Response to COVID-19

- Executive Order #43
 - Forward Delaware \$15,210,159
 - As of 02/03/21
 - Enrollments: 1049
 - Program Completions: 135
- Launch DE VOCAL Chat
 - <https://vocal.delaware.gov/>
- Virtual Workshops and Job fairs
- Upgraded AJC Registration and Resource Room areas

Focus on Registered Apprenticeship

- The Division oversees the State's Registered Apprenticeship Program and has been the recipient of almost \$2.7 million in grants since 2016 from US DOL to expand this workforce tool for local employers.
- With the support from General Funds to DOL and DOE and USDOL, Delaware has expanded.

DOL GF Requests

- **\$500,000 in General Funds-Division of Employment and Training**
 - This request will support a pilot program to elevate Delawareans to their next career level by funding noncredit certificate programs and other support services needed
- **\$175,000 in General Funds-Division of Employment and Training**
 - This request will support the Department’s Advancement through Pardons and Expungement Program and will be used to add staff to provide direct client services.
- **\$42,500 in General Funds and 1 FTE-Division of Employment and Training**
 - The request will leverage 75% federal funding for the addition of a Deputy Director. The combination of expanded programs and increased services provided to Delaware residents requires an additional leadership position.
 - Total cost of this position is \$165,000.

DOL ASF Request

- **\$24,500 in Appropriated Special Funds-Division of Industrial Affairs**
 - The request will remedy a deficit in spending authority.

Questions?



FY22 Joint Finance Committee Hearing • 02/09/2021