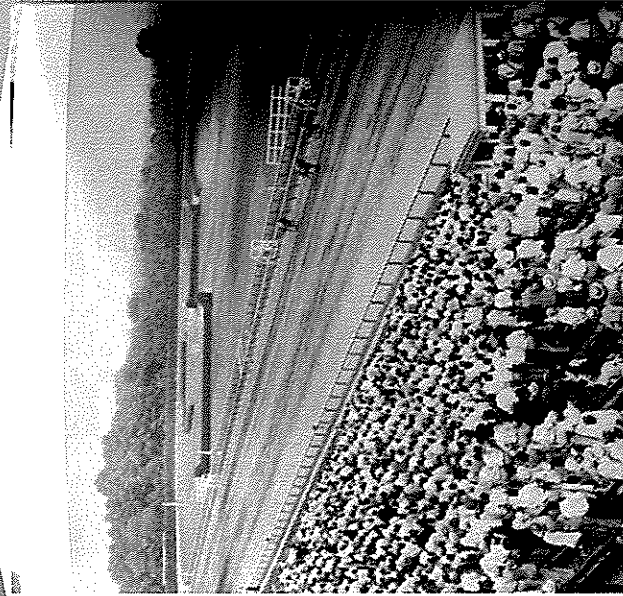
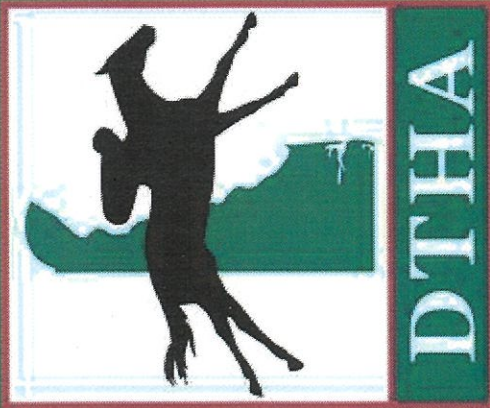


# The Grand Tradition of thoroughbred racing began at Delaware Park in 1937



In this photograph, Thoroughbred racehorses are seen changing stalls in the stretch to the finish line at Delaware Park Raceway in front of thousands of eager fans on July 3, 1947. Inside the dirt track, jockeys are crouched with maps for the steepchase events. A renowned Thoroughbred competitor and horse breeder Marion Dupont Scott, who managed Montpelier Stables, owned, raised, and trained flat and steepchase racehorses. A talented horsewoman, Scott grew up riding in Virginia and became interested in racing. She assisted her brother, William Dupont, in developing a number of enterprises including Delaware Park Raceway, Springdale Race Course in Camden, South Carolina, and Fair Hill Training Centre in Maryland, which covers more than 5,000 acres and is where the National Steeplechase Association Headquarters is located. (Courtesy of Delaware Historical Society)





# Delaware Thoroughbred Horsemen's Association

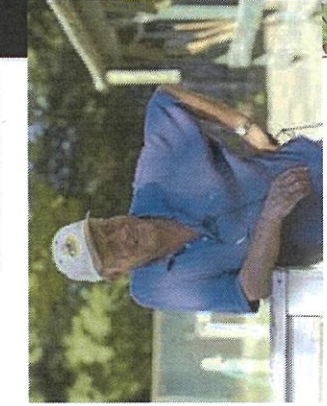
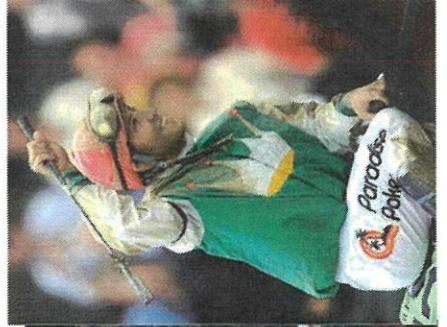
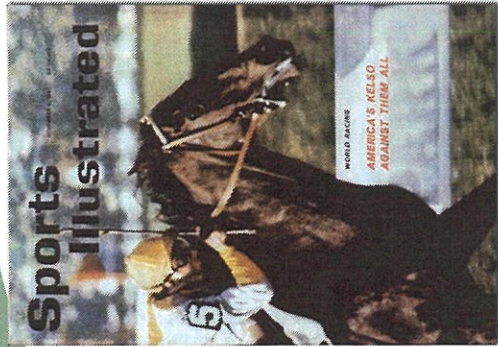
Represents more than 2,500 Owners and Trainers  
that race at Delaware Park.

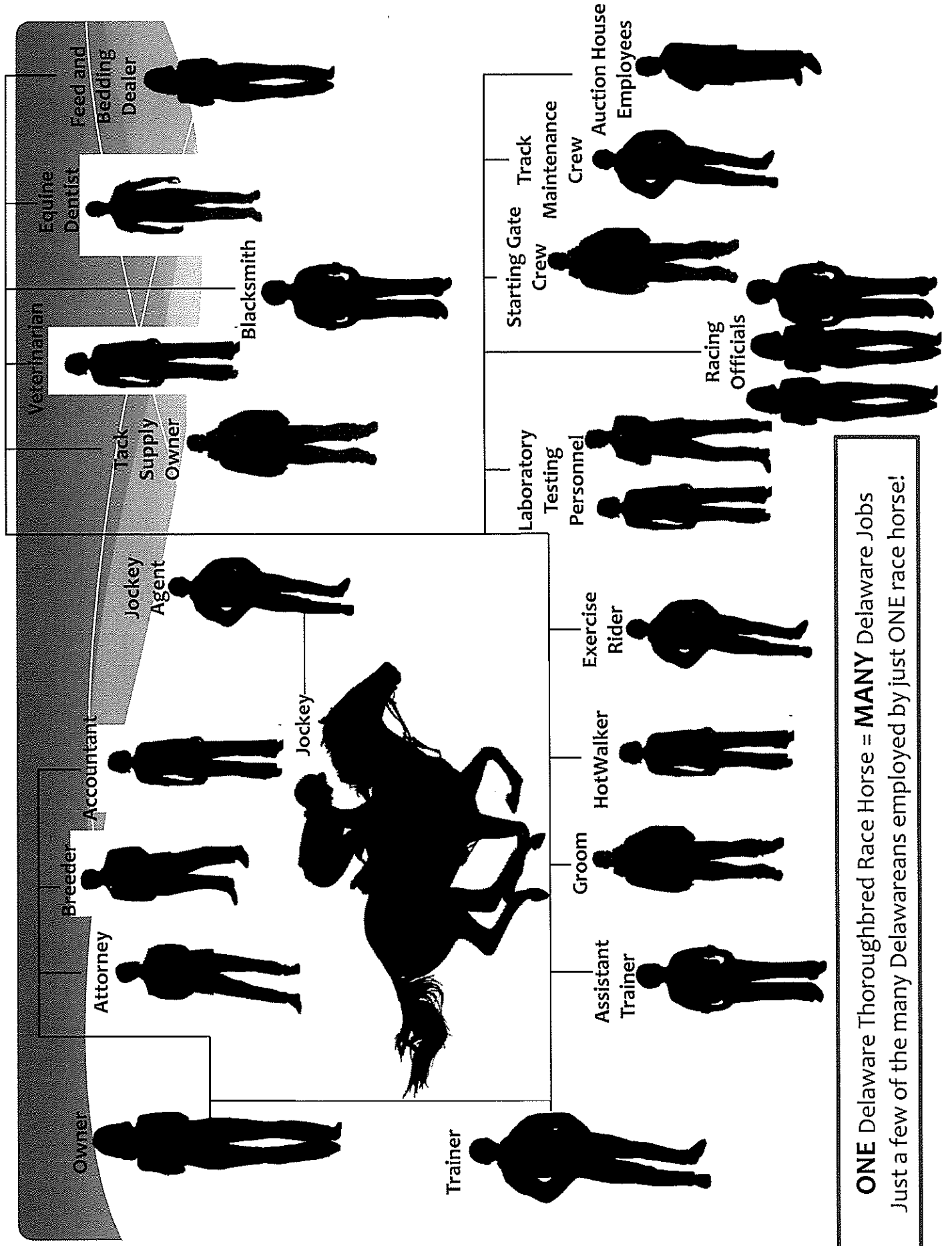


Founder and proud sponsor of the Delaware  
Certified Thoroughbred Program.



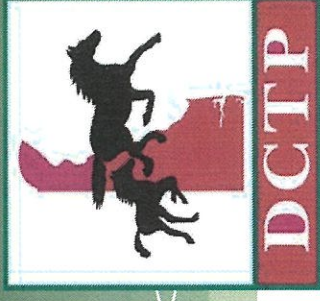
# Famous Names of Delaware Thoroughbreds







**ONE** Delaware Thoroughbred Race Horse = **MANY** Delaware Jobs  
 Just a few of the many Delawareans employed by just **ONE** race horse!

# Delaware Certified Thoroughbred Program (DCTP)



- \* Founded in 2002.
- \* 82 farms and over 2,500 acres preserved.
- \* Young horses are sent to a Delaware farm to spend 90 days in order to race for bonus money at Delaware Park.

## Delaware Horse Racing Farms Span All Three Counties

-  DE Standardbred Horse Racing Farms
-  DE Thoroughbred Horse Racing Farms

